





Considering the great number of writers that have celebrated its wonders and uniqueness, one would almost think that Lake Como and the area that surrounds it are, if not inventions, at least literary characters.

Pliny the Elder, Johann Wolfgang Goethe, Ugo Foscolo, Stendhal, Alessandro Manzoni, Henry W. Longfellow, Honoré de Balzac, Mark Twain, Antonio Fogazzaro, Ezra Pound, Virginia Woolf and Filippo Tommaso Marinetti: they all – the list of names seems like a condensed history of literature – stood upon its bank. They all came under the spell of its subtle, pervasive charm, and, moved, wrote touching portrayals.

Longfellow, for example, wrote of the Lake: *“I ask myself, is this a dream? Will it all vanish into air? Is there a land of such supreme and perfect beauty anywhere?”*

Having left the car in the garage above the apartments, you leave the Regina Highway and descend towards the living units. The relationship between man and traffic changes instantly, leaving space for nature: your eyes fall upon and establish a new protagonist, the lake.

When catching a first glimpse of the lake, you are still far from and higher than the water, and it is during the descent that a relationship is born between man, water, rock and greenery, which strongly characterises the location.





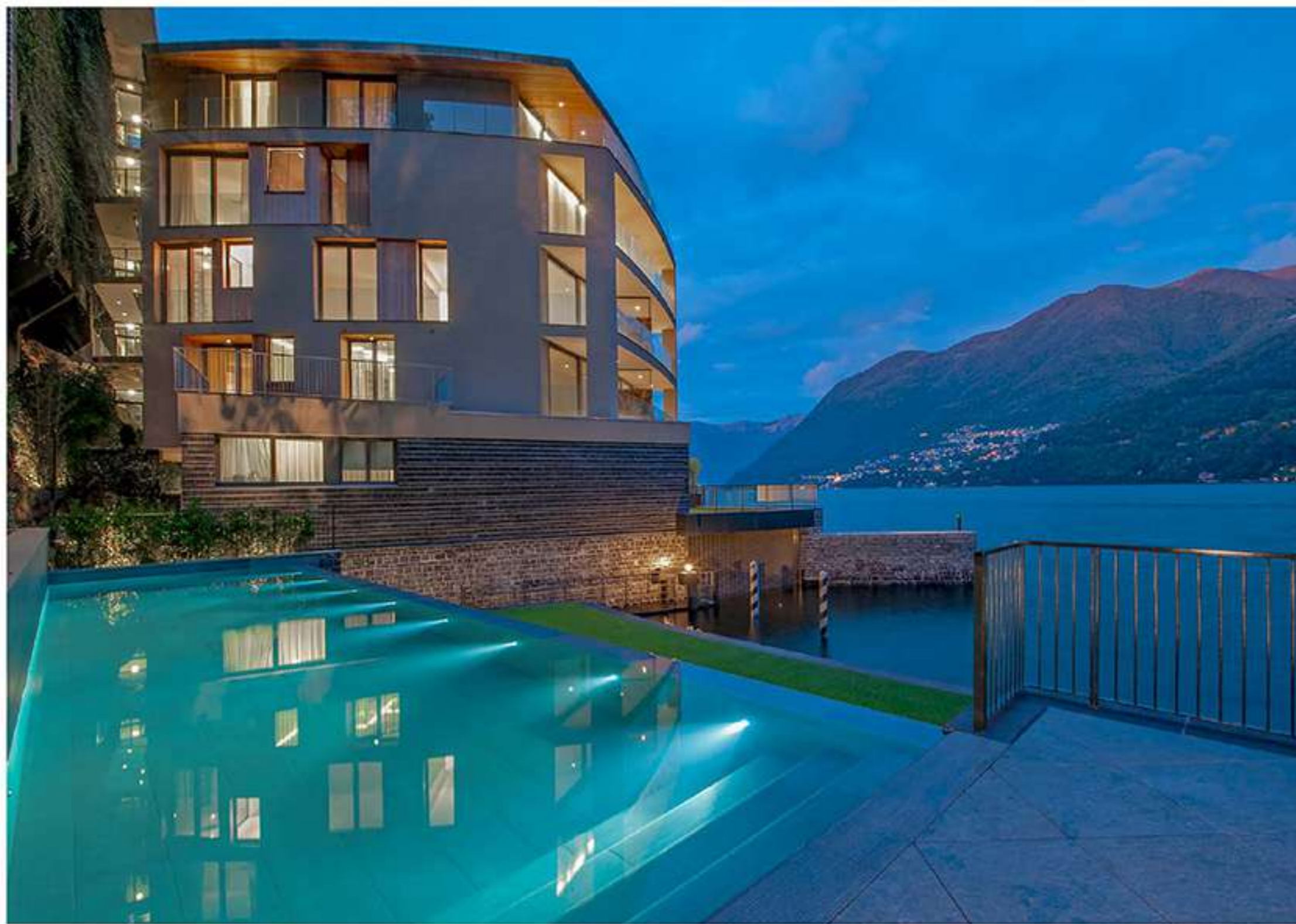


The architectural quality guarantees that the building performs to a high level, resulting from both a careful selection of materials and research into the building technologies used in the project.

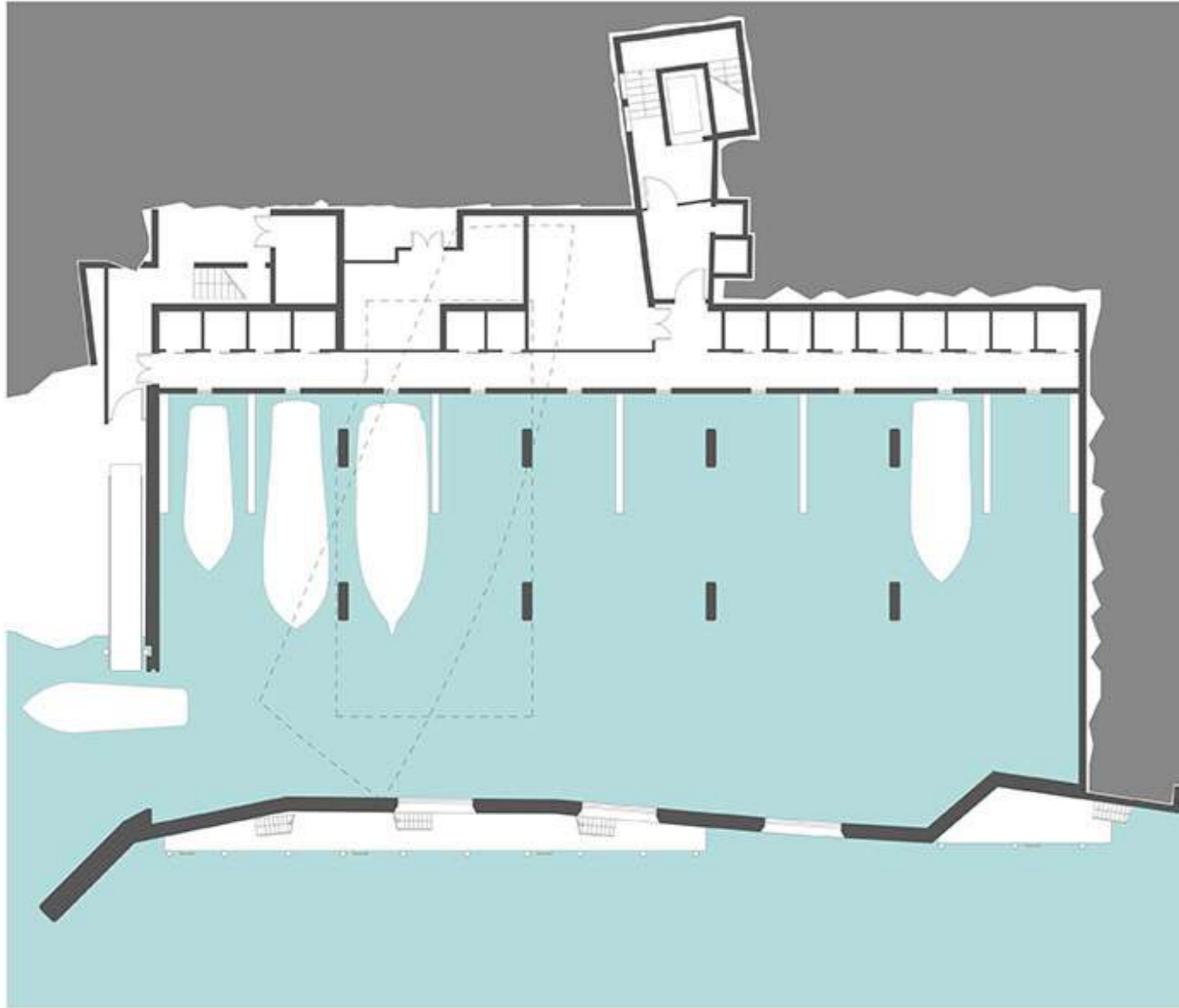
The design of the building's envelope and fixtures render its construction perfectly "contemporary" and in line with passive homes typical of sustainable architecture, with attention paid to energy consumption and reducing emissions.

A building culture for contemporary homes, which combines sustainability, drastic reduction of energy costs and a perfect climatisation of the rooms. The intervention also takes care of the area in environmental terms, through the planning of green spaces, which are fundamental for the project to be a success.

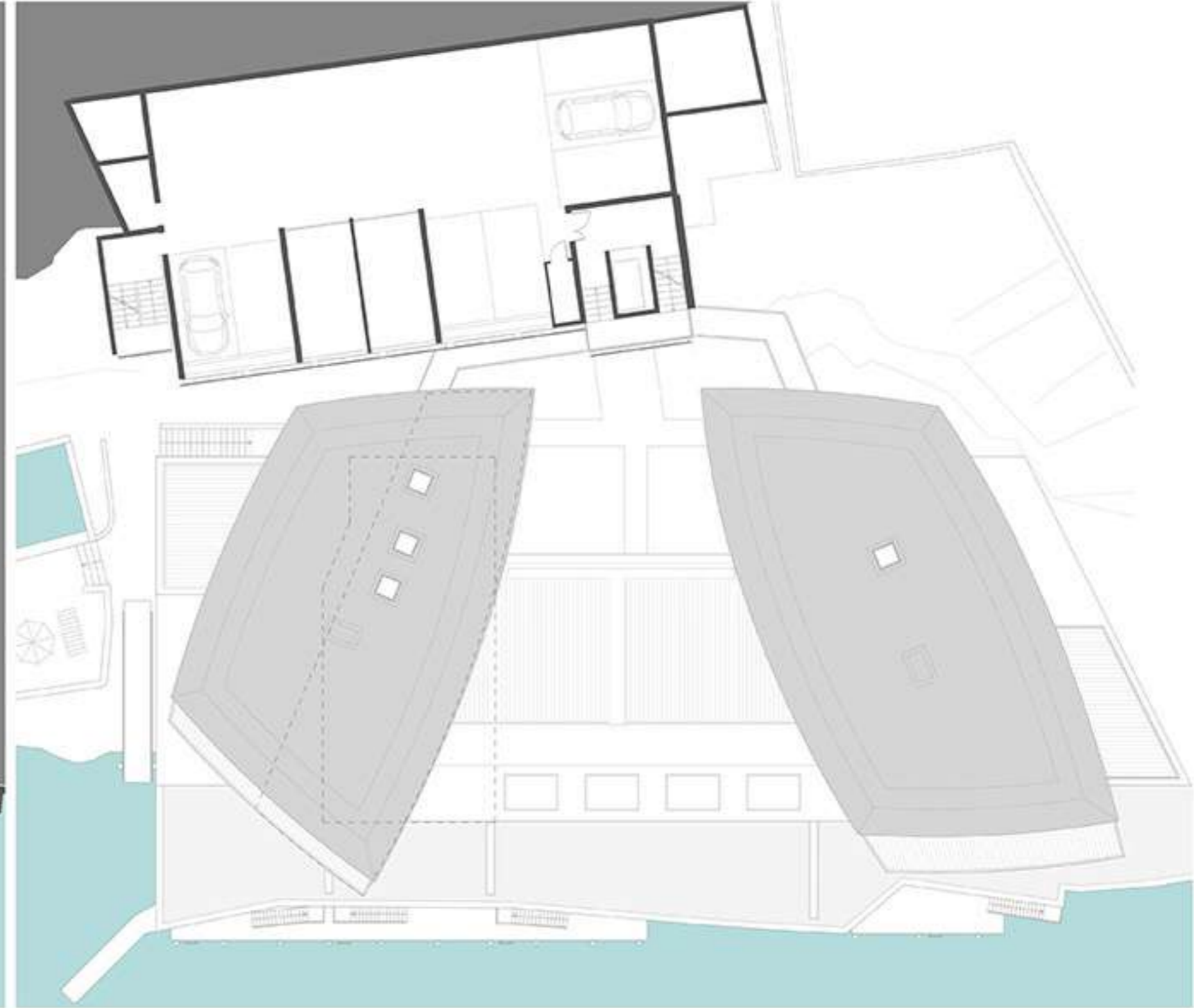
The planting of botanical species, starting with local varieties, is being studied, and using greenery to hide the service areas is foreseen, to leave the building as natural a backdrop as possible.







PRIVATE DOCK



PRIVATE GARAGE



